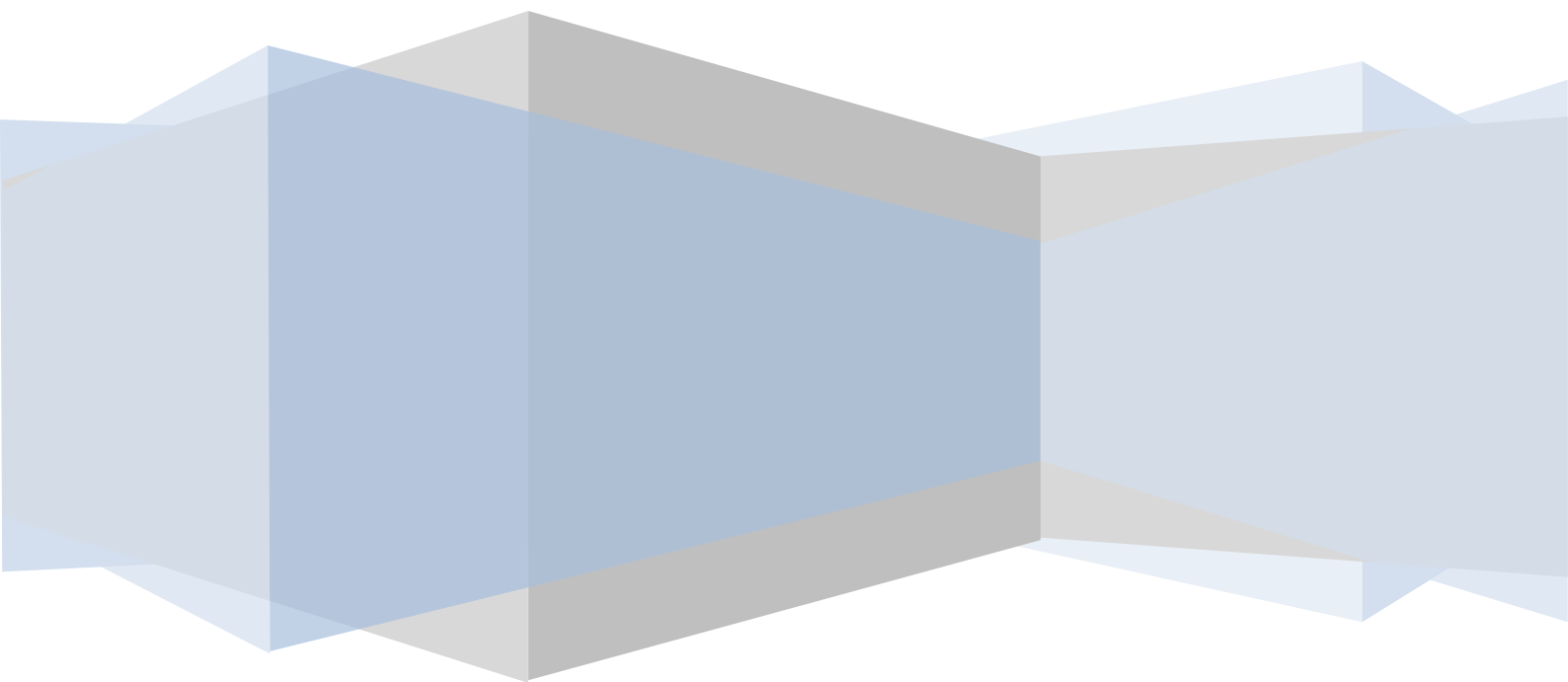


Current Cost Data Cable User Guide

Installing and configuring the data cable



Contents

About the Data Cable	3
Data Cable Installation Steps	3
Post Installation Checks	3
So the driver is installed, can I talk to the monitor?	5
Windows XP	5
Windows Vista and Windows 7	7
Appendix 1 - C2 Terminal	8
Appendix 2 - Driver Downloads	10
Appendix 3 - Current Cost Envi (CC-128) Button Controls	11

ABOUT THE DATA CABLE

The data cable is an USB to RJ45 cable that takes serial output from the Current Cost monitor and uses the Prolific PL-2303 chip to convert serial to USB.

Therefore it is necessary to install drivers for the PL-2303 chipset so the USB cable works correctly.

If you wish to connect using a serial cable to the current cost monitor, then we do have an RS-232 cable available, please contact us for more details or look on the shops at Amazon or Ebay.

DATA CABLE INSTALLATION STEPS

Drivers are available for Windows, Mac and Linux. Please visit the Current Cost website and download the drivers according to your operating system.

1. If connected, remove the data cable from the USB socket.
2. Uninstall any previously installed Current Cost data cable drivers.
3. Download the drivers from the Current Cost website
<http://currentcost.com/software-downloads.html>
4. Extract the zip file, then double click the .exe installer.
5. Follow the wizard.

POST INSTALLATION CHECKS

Once you have installed the drivers, connect the data cable from your Current Cost monitor to your PC.

Verify the new port is installed

Check that the drivers have installed correctly for the data cable by viewing the ports in Device Manager.

Go to **Control Panel -> Device Manager**. Expand the Ports node and verify that you have a Port listed as below in **Figure 1**.

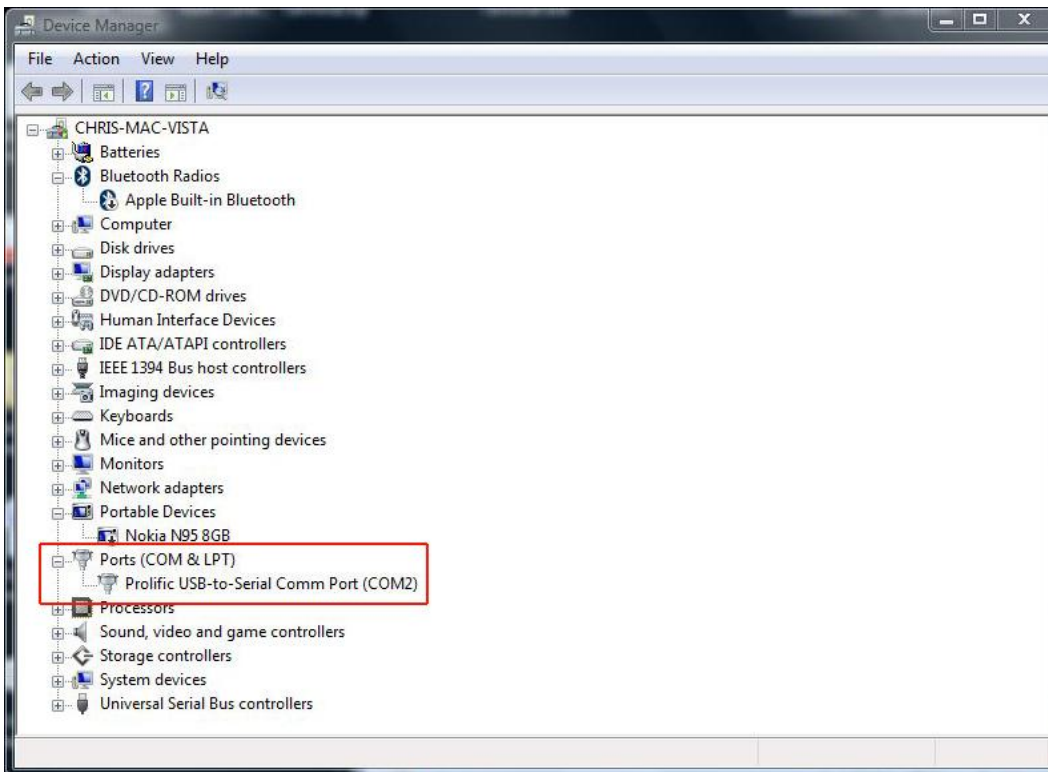


Figure 1 – Verify the port is installed

Set the Baud rate

Check that your baud rate is set correctly for the new serial port. In Device Manager, right click the Prolific USB-to-Serial Comm Port and click properties. **Click the ports tab and select 57600 for the “Bits per second” as in Figure 2.**

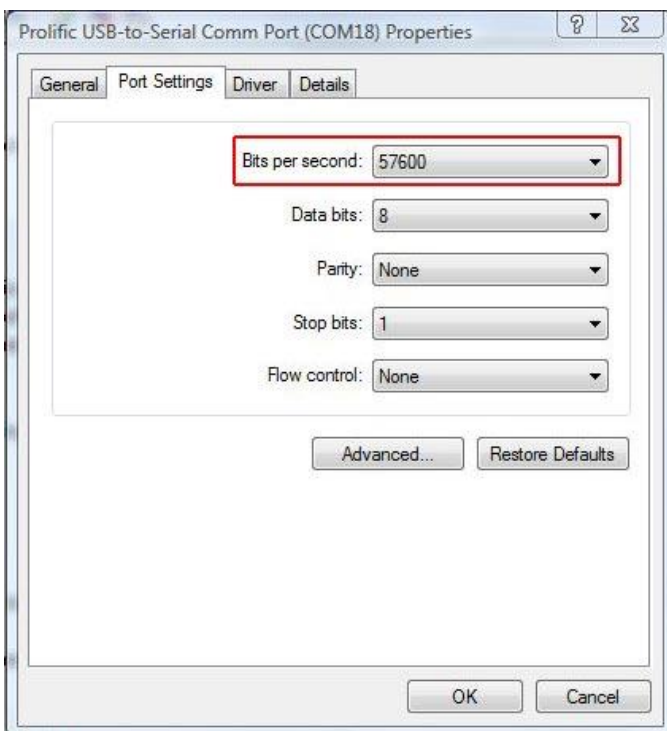


Figure 2 – Baud Rate Settings

SO THE DRIVER IS INSTALLED, CAN I TALK TO THE MONITOR?

If you have followed the Data Cable Installation Steps, you should find that you can use any of the software developed for use with Current Cost monitors.

Take a look at the software downloads page where you can download free, trial and licensed software that works with Current Cost monitors.

To check that the data cable drivers are installed correctly,

WINDOWS XP

Windows XP has Hyper Terminal which can talk to the range of Current Cost monitors. Connect the Current Cost monitor to your PC using the data cable.

Launch hyper-terminal. Go to Start -> All Programs -> Accessories -> Communications -> Hyper Terminal.

Enter a name of your choice in the box and click OK.

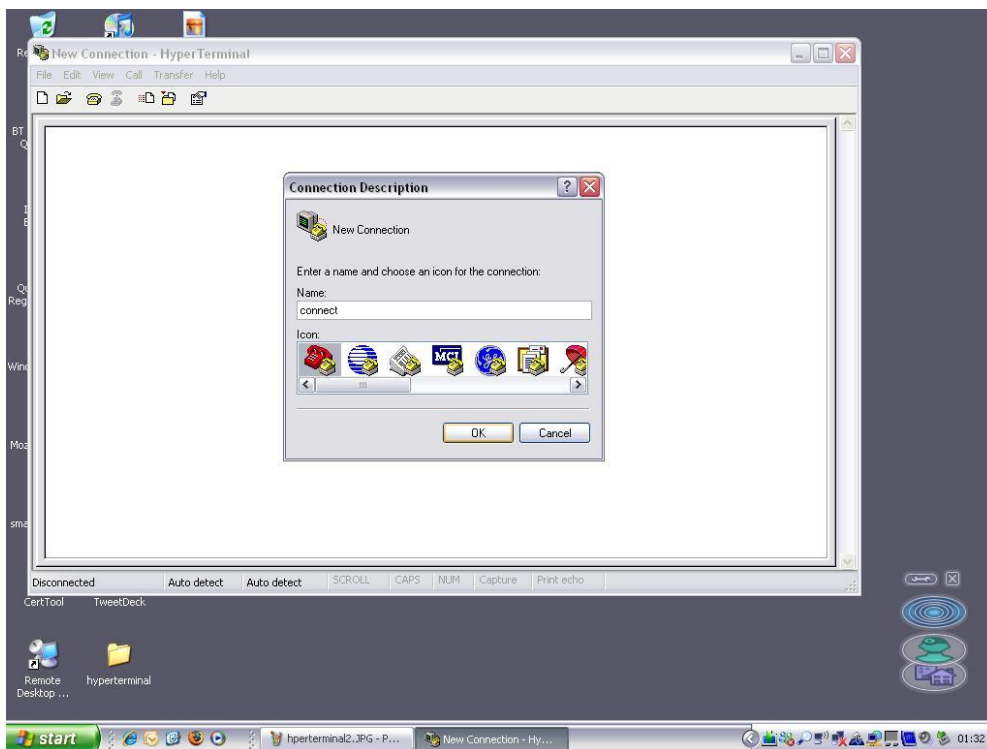


Figure 3 – Com Port

In the **Connect Using** drop down box, select your port as confirmed in **Post Installation Checks**.

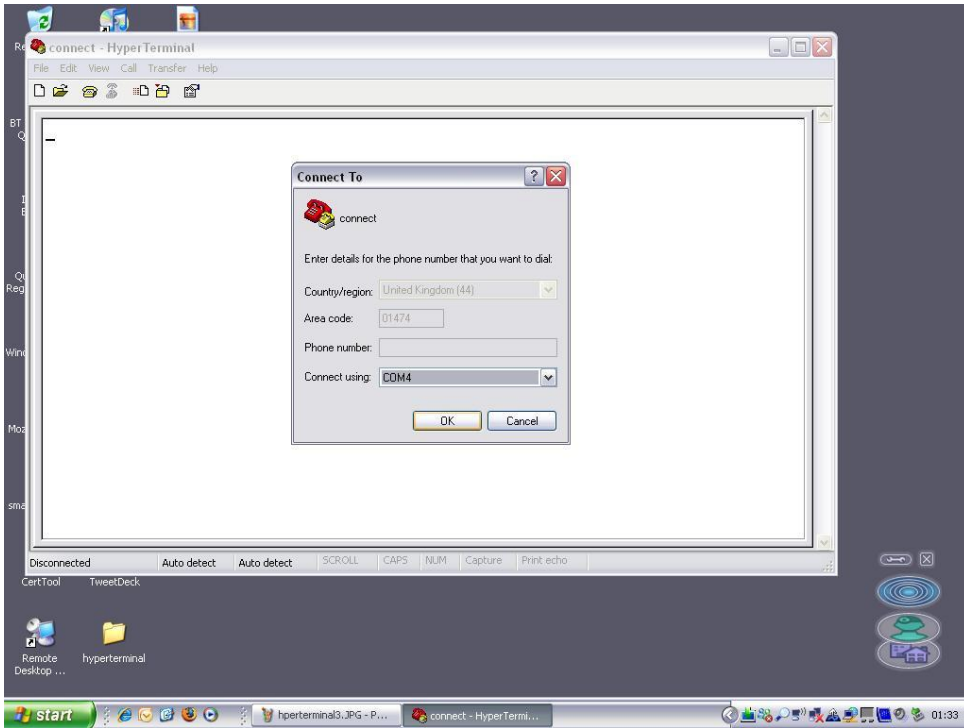


Figure 4 - Com Port

In the properties box, enter the baud rate and click OK as per **Appendix 1 – Current Cost Monitors and Baud Rates**.

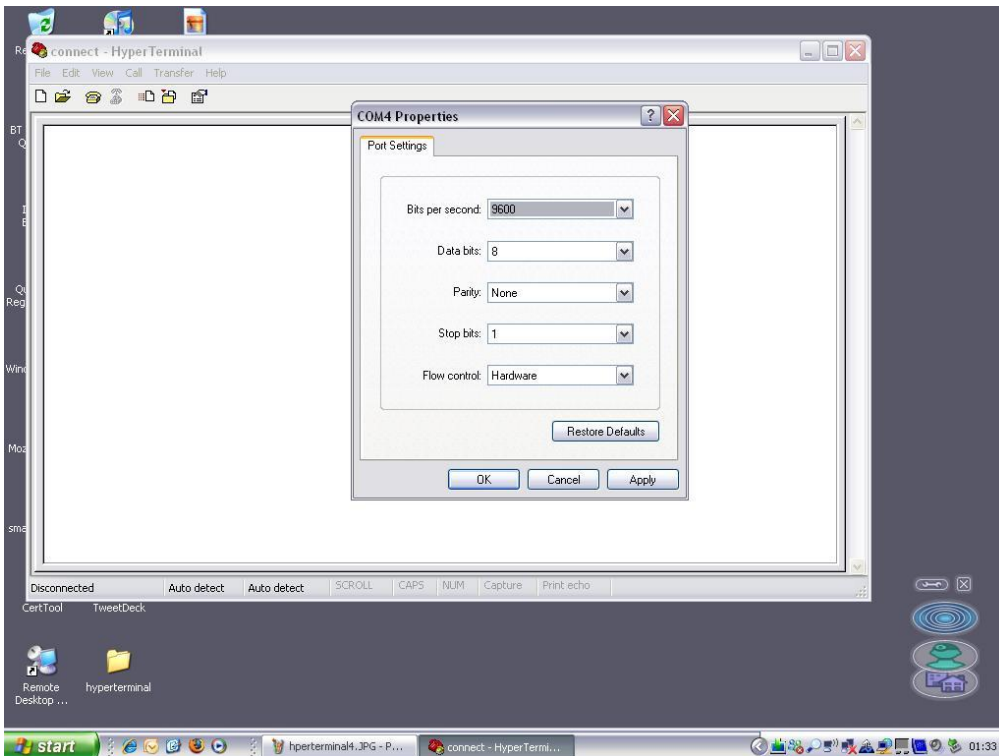


Figure 5 – Baud Rate

You will now see the raw data from the Current Cost Monitor:

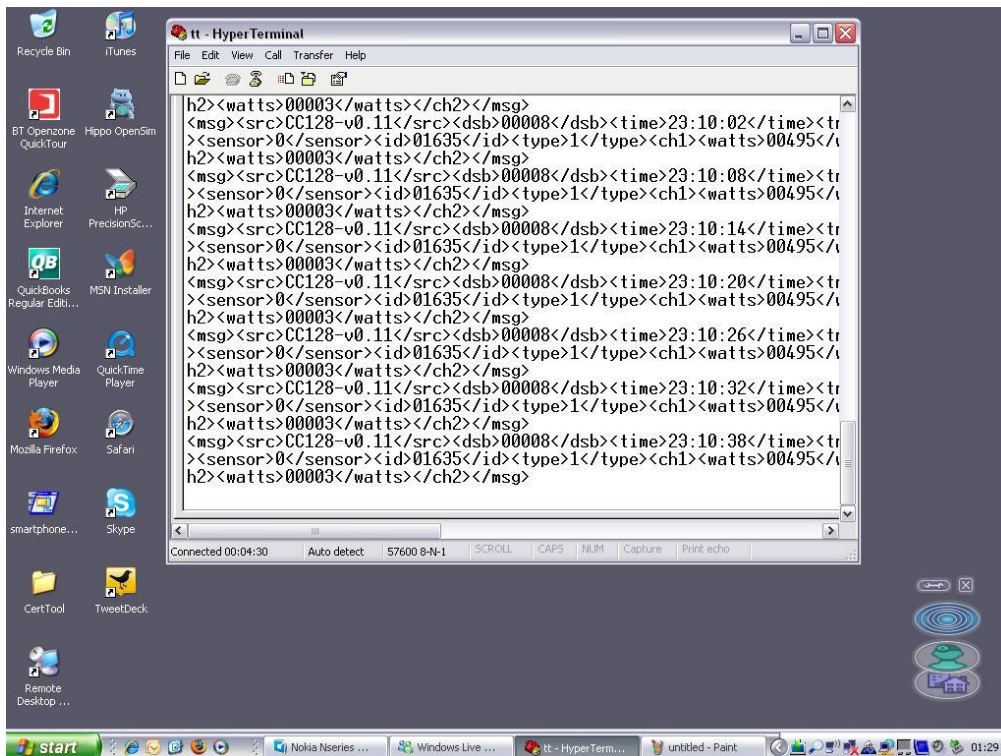


Figure 6 – Raw Data Output

If you are unable to see the raw data output, please check your cable connection and reinstall the drivers as above.

WINDOWS VISTA AND WINDOWS 7

To output the raw data in Windows Vista or Windows 7, download the C2 Terminal from the Current Cost website:

<http://currentcost.com/software-downloads.html>

Open the C2 Terminal, make sure your options are selected according to your Current Cost monitor and click **Open Port**.

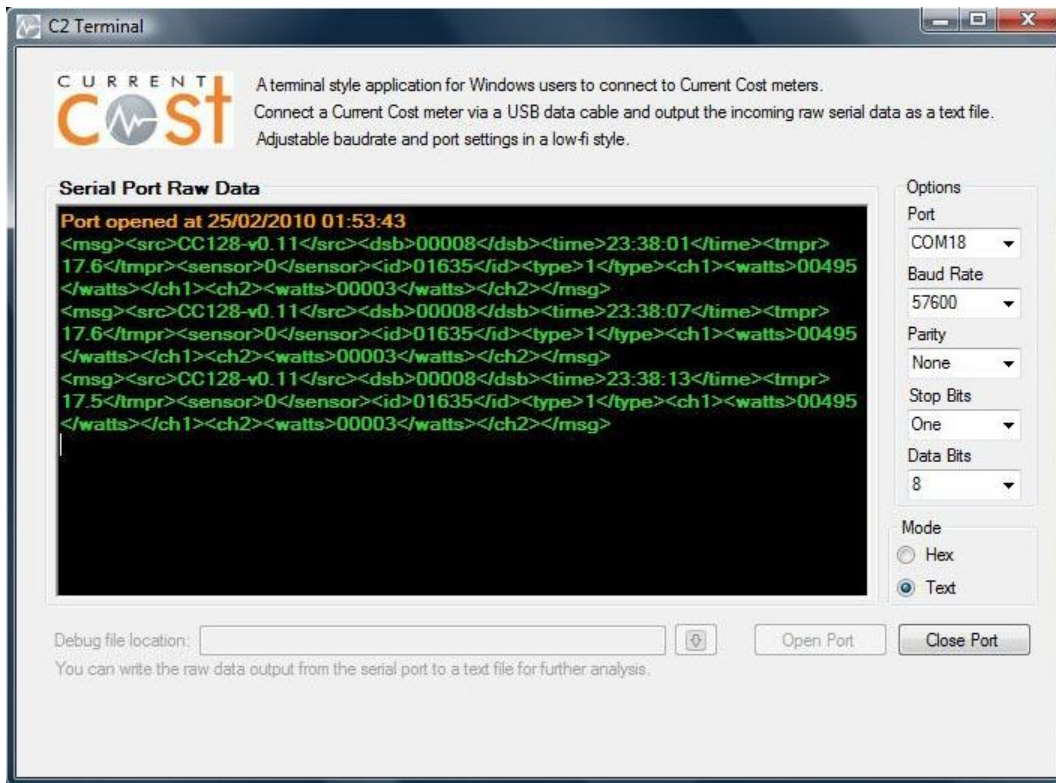


Figure 7 – C2 Terminal

If you are unable to see the raw data output, please check your cable connection and reinstall the drivers as above.

Please note that the C2 Terminal requires .NET 3.5 to be installed. See **Appendix 2** for details.

You can also use the C2 Terminal on Windows XP. However Hyper Terminal is installed by default on XP but not Windows Vista or Windows 7.

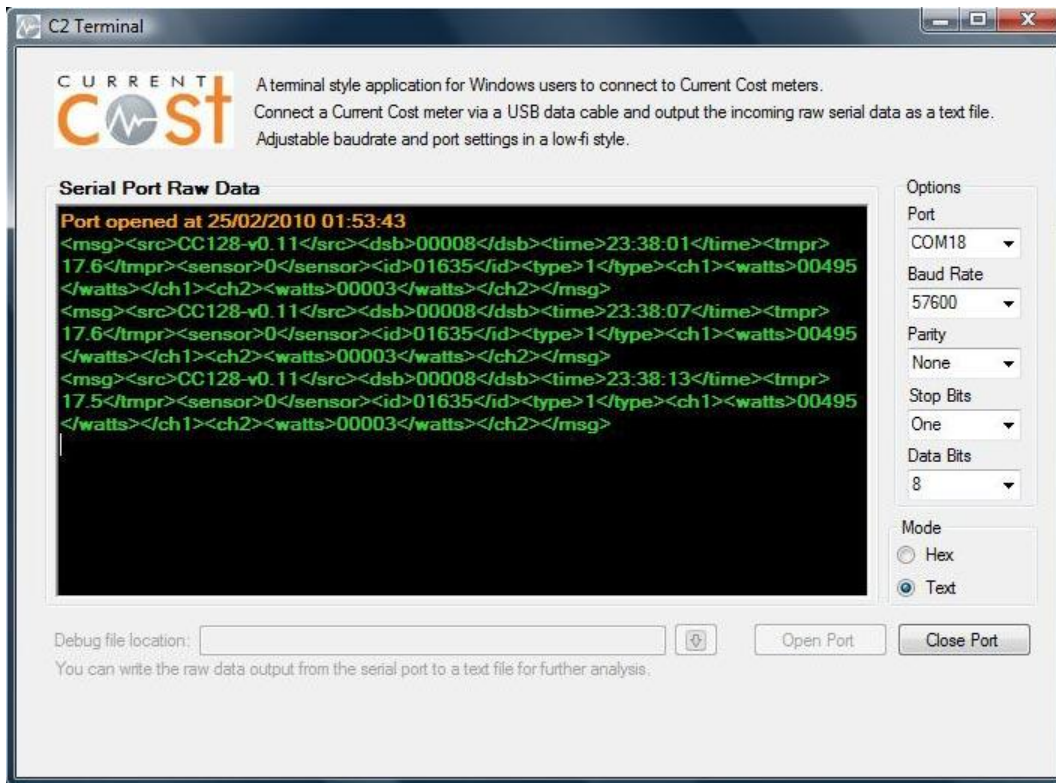
So the C2 Terminal is a convenient way of connecting to the raw output of Current Cost monitors.

APPENDIX 1 - C2 TERMINAL

The C2 Terminal is a convenient way of connecting to the raw output of Current Cost monitors.

Download the C2 Terminal: <http://currentcost.com/software-downloads.html>

Once downloaded, simply double click to launch the application.



The C2 Terminal requires .NET 3.5 to be installed. If you are on Windows 7 then you are probably OK, otherwise you can download .NET 3.5 from the Microsoft website here:

<http://www.microsoft.com/downloads/details.aspx?FamilyId=333325FD-AE52-4E35-B531-508D977D32A6&displaylang=en>

APPENDIX 2 - DRIVER DOWNLOADS

Drivers for the Current Cost data cables are available on the website:

<http://currentcost.com/software-downloads.html>

For the full range of drivers for the Current Cost data cables, please visit the Prolific website:

<http://www.prolific.com.tw/Eng/downloads.asp?ID=31>

APPENDIX 3 - CURRENT COST ENVI (CC-128) BUTTON CONTROLS

You can use the buttons on the front of the Current Cost Envi (CC128) to make various settings and changes. Here is a complete list of all the controls:

1. Up/Down changes appliance view
2. OK changes 1/7/30 days
3. Press and hold OK to set the clock
4. Press and hold Down to sensor tune the whole house, or the currently displayed appliance number.
5. Press and hold Up to set normal price (13.9p default, also sets low price the same).
6. Press and hold Up and Down to set low price (and start times, if prices are different).
7. Press and hold OK and Down to download the history to PC. Please note: all processor activity is halted during this download, even the clock. With a lot of history, the download may take some time! Unit resets once done.
8. Press and hold Up during switch-on to display the whole LCD for two seconds followed by the software version number. Remove and reconnect power on the display to restart.
9. Press and hold Up & Down as you push the power lead into the back of the Display, when the red light flashes, release the buttons. Then you will see the software version number. Remove and reconnect the power cable on the Display, this switches on, wipes all history data and tuning IDs and burns in fresh defaults. Display unit and transmitter(s) will need to be paired once again.