

Techtoniqs Energy Station Software Installation

Platform

- Windows XP & 7 [32 & 64 bit]
- Microsoft's NET framework

Hardware

- Current Cost Prolific USB Cable
- Prolific Driver
- Current Cost Envi/R Monitor
- Windows PC



Pre-Installation

- Techtoniqs Energy Station requires Microsoft's NET framework to be installed on the PC. Go [HERE](#) to download. If you do not have it installed, you will be asked to install it by the Techtoniqs installer.
- Go [HERE](#) to download the correct version of the Prolific Driver for your type of USB cable [black or white] and version of Windows.
- Download a version of the Techtoniqs software from [HERE](#). After the 30 day free trial you will need to register and purchase for approx \$15 for a lifetime licence.

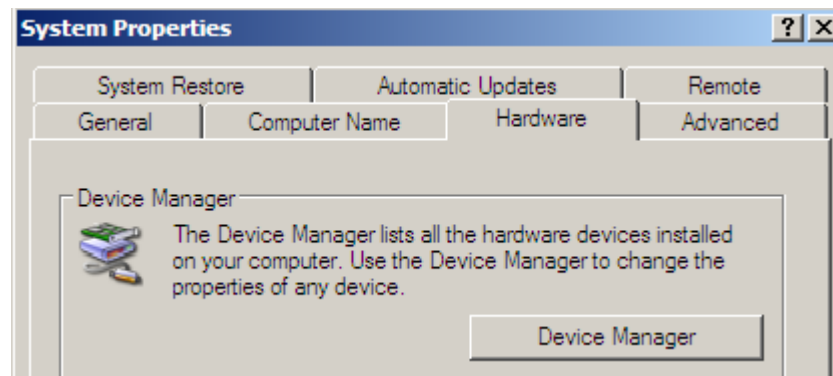
Installation

- Firstly make sure you DO NOT have the Prolific USB cable connected. Install the downloaded Prolific Driver.
- Plug in the Prolific USB cable. Windows should 'ding dong' and a message will appear mentioning new hardware has been found and is ready for use.
- In Window's Control Panel you can confirm the correct installation by seeing something similar to:

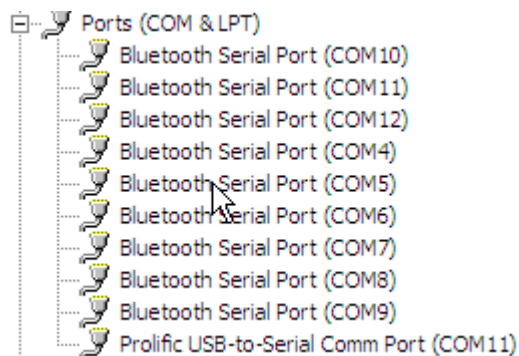


Size 2.29MB

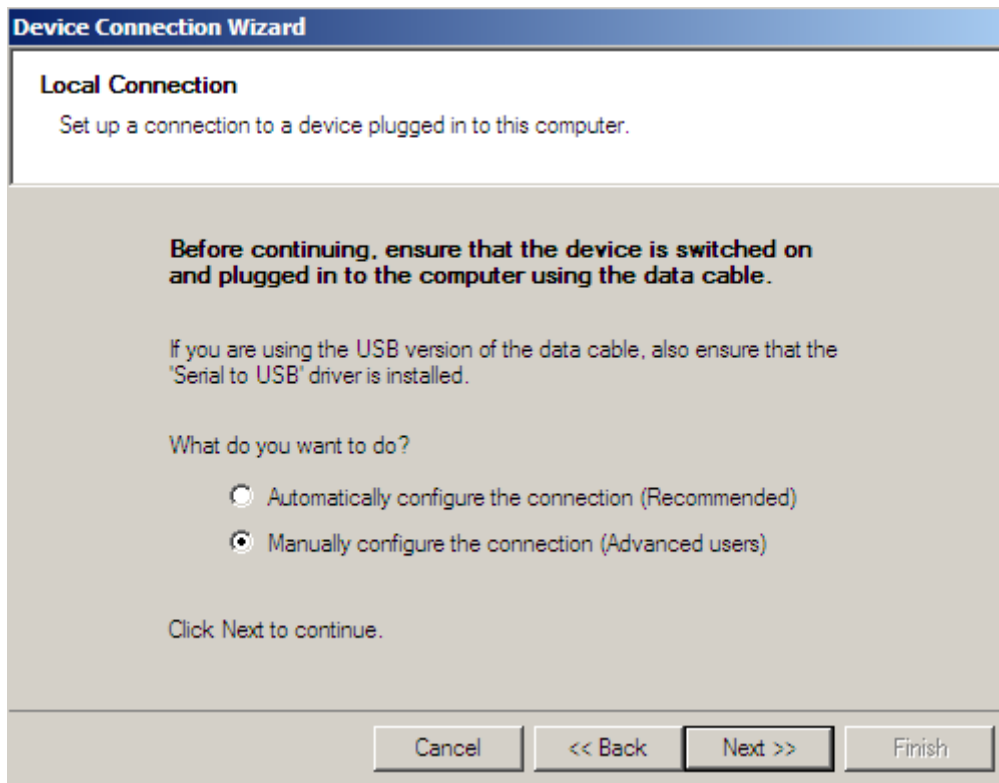
- Techtoniqs will need to know the port number you have the USB Prolific cable plugged into. This can be found in Window's Device Manager, [right click on 'My Computer', click on Properties, click on Hardware, click on Device Manager.



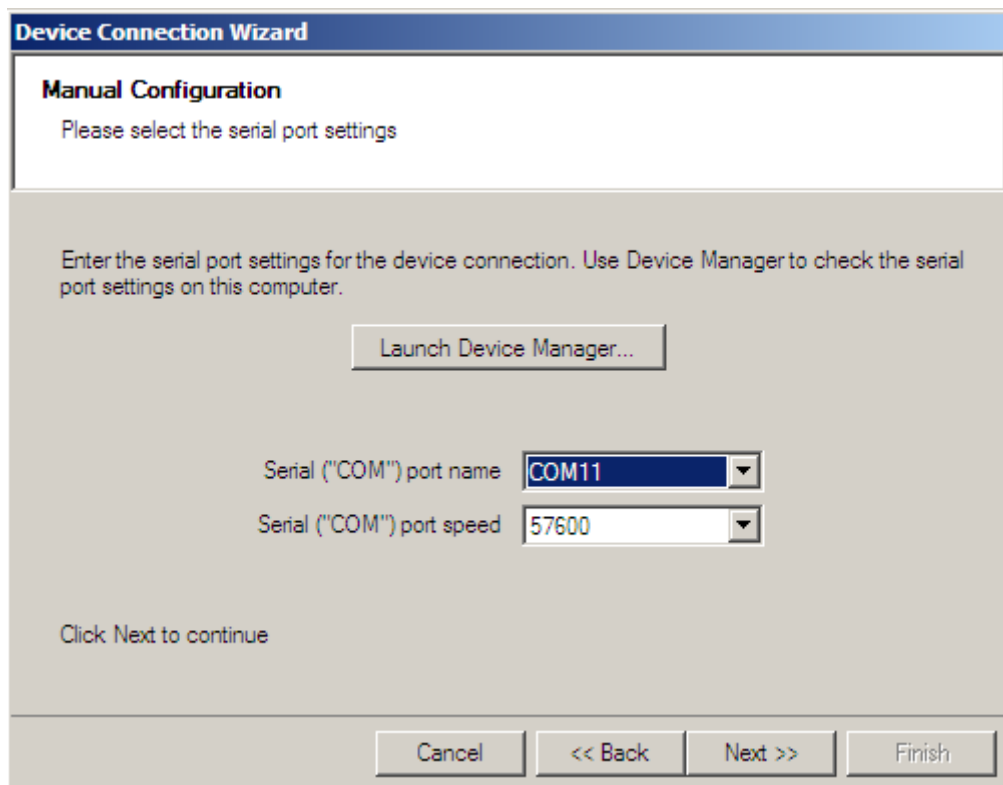
- Once in the Device Manager, expand the Ports (COM & LPT) where you will see the Prolific USB cable listed if installation has been successful. The example below showing the port used is COM11



- Unplug the USB Prolific cable for now
- Install the Techtoniqs Energy Station and run the software
- Once the software is up and running, click on File, New, Device Connection. You will be welcomed to a Device Connection Wizard. You are going to add the port information MANUALLY as shown



- Next add the port number. In our example this was COM11. The port speed should be set to 57600




- Give your connection a different name if required

Device Connection Wizard

Finished!

The new device connection has been successfully created using the following settings:



Device location:

Device type:

Serial ("COM") port name:

Serial ("COM") port speed:

Enter a name to identify this device (eg. "Charlotte's House")

Device connection name:

Click Finish to exit, or click Next to name the individual appliance modules on your device.

- Label the channels to your requirements

Device Connection Wizard

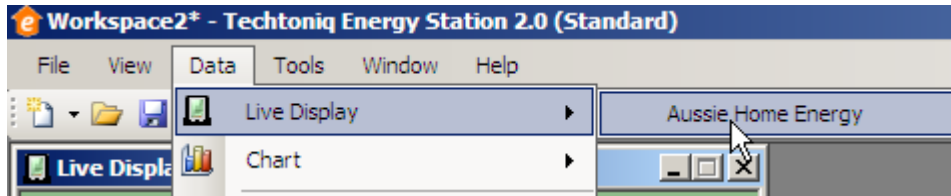
Appliance Naming

Name the individual appliance modules connected to your device.

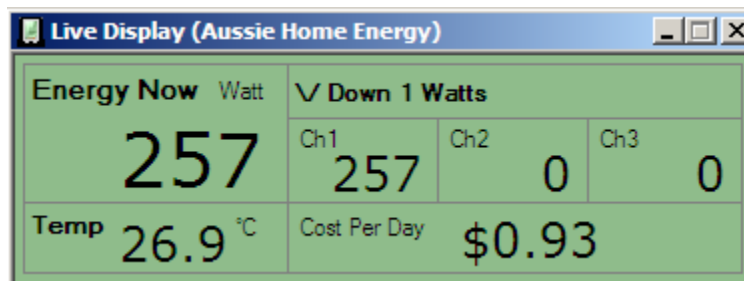
Appliance 0 ("Whole House" total)

Appliance 1	<input type="text" value="Solar Power Generation"/>	Appliance 6	<input type="text" value="Home Office"/>
Appliance 2	<input type="text" value="Total Power Circuits"/>	Appliance 7	<input type="text" value="Hot Water"/>
Appliance 3	<input type="text" value="Total Light Circuits"/>	Appliance 8	<input type="text" value="Hot Plate & Oven"/>
Appliance 4	<input type="text" value="Refrigeration"/>	Appliance 9	<input type="text" value="Tenant's Caravan"/>
Appliance 5	<input type="text" value="Lounge Entertainment"/>		

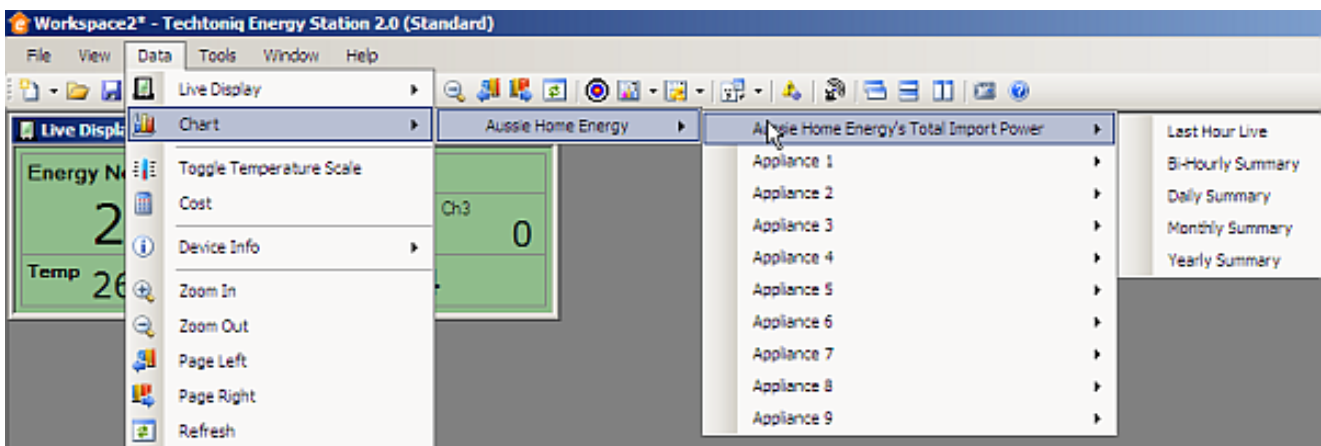
- Click on Finish
- Now exit the Techtoniqs software, making sure you save before exiting
- Install the Prolific USB cable [Windows will acknowledge this]
- Load the Techtoniqs Energy Station and click on Data, Live Display and 'the name of your connection'



- Next you will see something similar to:



- By clicking on Data and Chart you will then be able to add the necessary charts, to the Techtoniqs desktop you wish to see. The charts can all be resized and moved around by dragging with the mouse



- To see an example of a homes total and solar generation go [HERE](#).

Your feedback on this document is important to allow us to make changes we may have overlooked or where Techtoniqs has made changes.